

HBG Series

NATURALLIGHTING.COM
 www.naturallighting.com
 888.900.6830
 email: sales@naturallighting.com



More light, on demand, with fully accessorized rugged construction.

Industrial Fluorescent Hi-Bay

FEATURES & SPECIFICATIONS

Size (in mm), W x L x H

4 Lamp - 14.38 x 48 x 3.25 (365 x 1220 x 80)
 6 Lamp - 21.38 x 48 x 3.25 (545 x 1220 x 80)

Mounting

4 point chain mount (101 HC accessory available)
 2 point tong chain mount (202 or 203HC acc available)
 2 point stem mount - 1/2" - no accessories required
 Surface mount - no accessories required
 Single point mount (62HBD accessory available)

Materials

Galvanized steel body, code gage. Lamps secured in twist lock lamp holders. Premium, full specular reflector with protective film. Multiple KOs and Access plate on back for rapid wiring.

Lamps

Four or Six T8, T5HO, or T55 lamp positions.

Optional

Emergency ballasts, cord sets, whips.

Accessories

Mounting kits. Occupancy or daylight sensor kits.

Listing

UL Listed. Thermally protected. High power factor. Immediate Restrike.

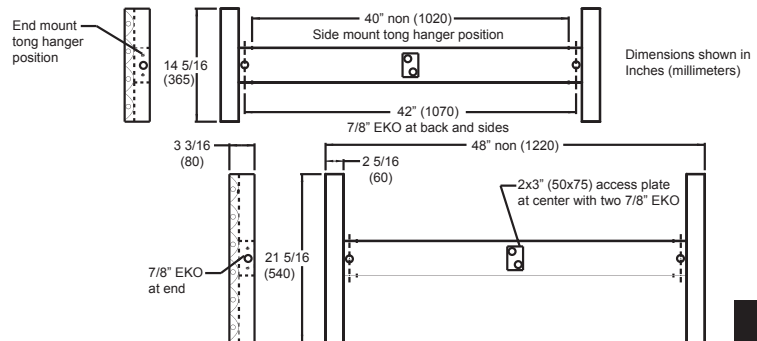
**** Also Available in NEW T6 HO Lamps**

ORDERING INFORMATION/DIMENSIONS

Example: HBG632M21H120CS Industrial Hi-Bay Fluorescent, six (6) 32W T8 lamp positions, full specular Narrow distribution, no uplight reflector, 120V Hi Lumen electronic ballast, and 6ft 5-15P 120V black cordset.

Series	No. of Lamps/Wattage	Reflector	Electronic Ballasts	Typical Options
HBG	432 - 4lamp, 32W, T8 or 4lamp, 30W, T55	M21 - Full specular mirror reflector, no uplight, narrow distribution	H120 - 120V Fixed Hi Lumen (T8 or T55)	CS - 5-15P 120V 6ft Cordset black
			H277 - 277V Fixed Hi Lumen (T8 or T55)	
	632 - 6lamp, 32W, T8 or 6lamp, 30W, T55	W21 - Enhanced white reflector, no uplight, std distribution	HMV - Multi (120-277) Hi Lumen (T8 or T55)	CS12 - L7-15P 277V Trist-Lock 6ft Cordset black
			N120 - 120V Fixed Normal (T5, T8, or T55)	
	454 - 4lamp, 54W, T5HO	M23 - full specular mirror reflector, no uplight, wide distribution	N277 - 277V Fixed Normal (T5, T8 or T55)	CS10 - 6ft Cordset black, no plug
			MV - Multi (120-277) Normal (T5, T8, or T55)	
654 - 6lamp, 54W, T5HO		Generic. Contact factory for availability of specified ballasts.	WP - 6ft 3wire SnapFit, Flexible whip	
			EM - Emergency ballast	

Accessories - order as a separate part number
101HC - Chain Kit
202HC - Tong hangers, end mout (pair)
203HC - Tong hangers, side mount (pair)
62HBD - Single point hanger adapter
Contact factory for wireguards, occupancy and daylight sensor kit availability



NATURALLIGHTING.COM
 www.naturallighting.com
 888.900.6830
 email: sales@naturallighting.com



More light, on demand, with fully accessorized rugged construction.

NATURALLIGHTING.COM
 www.naturallighting.com
 888.900.6830
 email: sales@naturallighting.com

HBG Series

Industrial Fluorescent Hi-Bay

PHOTOMETRIC DATA

**** Also Available in NEW T6 HO Lamps**

Zonal Cavity Coefficients - HBG432M21

Lamp	2950 Lumens								
RC	.80			.50			.30		
Wall Refl	.70	.50	.30	.50	.30	.10	.50	.30	.10
0	1.18	1.18	1.18	1.11	1.11	1.11	1.05	1.05	1.05
1	1.09	1.05	1.01	0.98	0.95	0.92	0.94	0.92	0.90
2	1.00	0.9	0.85	0.87	0.82	0.78	0.84	0.80	0.76
3	0.92	0.82	0.73	0.77	0.71	0.66	0.74	0.69	0.63
4	0.84	0.72	0.63	0.69	0.61	0.56	0.67	0.61	0.55
5	0.77	0.65	0.55	0.62	0.55	0.49	0.60	0.54	0.48
6	0.71	0.58	0.49	0.55	0.48	0.42	0.54	0.48	0.42
7	0.66	0.53	0.44	0.51	0.43	0.38	0.50	0.43	0.38
8	0.60	0.47	0.39	0.45	0.38	0.33	0.44	0.38	0.32
9	0.56	0.43	0.35	0.41	0.34	0.30	0.41	0.35	0.29
10	0.52	0.39	0.31	0.38	0.32	0.26	0.37	0.31	0.27
Zone	Lumens			% Lamp			% Fixt		
0-30	8380			41.9			38.2		
0-40	12460			62.3			56.7		
0-60	19220			96.1			87.5		
0-90	21700			108.5			98.8		
90-180	260			1.3			1.2		
0-180	21960			109.8			100.0		
Spacing criteria: Across = 0.9; Along = 1.3									

Zonal Cavity Coefficients - HBG454M21

Lamp	2950 Lumens								
RC	.80			.50			.30		
Wall Refl	.70	.50	.30	.50	.30	.10	.50	.30	.10
0	1.19	1.19	1.19	1.08	1.08	1.08	1.02	1.02	1.02
1	1.11	1.06	1.03	0.98	0.95	0.93	0.93	0.91	0.89
2	1.03	0.95	0.89	0.88	0.84	0.80	0.84	0.80	0.77
3	0.95	0.85	0.78	0.78	0.73	0.68	0.76	0.71	0.67
4	0.88	0.77	0.69	0.72	0.65	0.60	0.69	0.63	0.59
5	0.81	0.70	0.61	0.65	0.59	0.54	0.62	0.56	0.52
6	0.76	0.64	0.56	0.60	0.53	0.47	0.58	0.52	0.47
7	0.71	0.59	0.50	0.54	0.48	0.43	0.54	0.48	0.43
8	0.67	0.54	0.45	0.51	0.44	0.39	0.50	0.44	0.40
9	0.63	0.50	0.42	0.48	0.42	0.37	0.46	0.40	0.35
10	0.60	0.46	0.39	0.44	0.38	0.33	0.43	0.37	0.33
Zone	Lumens			% Lamp			% Fixt		
0-30	8380			41.9			38.2		
0-40	12460			62.3			56.7		
0-60	19220			96.1			87.5		
0-90	21700			108.5			98.8		
90-180	260			1.3			1.2		
0-180	21960			109.8			100.0		
Spacing criteria: Across = 0.9; Along = 1.3									

Zonal Cavity Coefficients - HBG632M21

Lamp	2950 Lumens								
RC	.80			.50			.30		
Wall Refl	.70	.50	.30	.50	.30	.10	.50	.30	.10
0	1.10	1.10	1.10	1.01	1.01	1.01	0.96	0.96	0.96
1	1.02	0.97	0.93	0.90	0.87	0.84	0.85	0.83	0.81
2	0.94	0.86	0.80	0.80	0.75	0.71	0.75	0.71	0.68
3	0.86	0.76	0.69	0.71	0.65	0.60	0.66	0.62	0.57
4	0.79	0.68	0.59	0.62	0.56	0.51	0.60	0.54	0.50
5	0.73	0.61	0.52	0.57	0.51	0.45	0.54	0.48	0.43
6	0.68	0.55	0.46	0.51	0.44	0.39	0.49	0.43	0.39
7	0.63	0.50	0.42	0.47	0.40	0.38	0.45	0.39	0.35
8	0.59	0.47	0.38	0.43	0.36	0.32	0.41	0.36	0.31
9	0.55	0.43	0.35	0.40	0.33	0.29	0.38	0.33	0.28
10	0.52	0.52	0.32	0.37	0.31	0.26	0.36	0.30	0.26
Zone	Lumens			% Lamp			% Fixt		
0-30	5045			28.5			30.2		
0-40	8000			45.2			47.9		
0-60	13664			77.2			81.9		
0-90	16656			94.1			99.8		
90-180	35			0.2			0.2		
0-180	16691			94.3			100.0		
Spacing criteria: Across = 1.2; Along = 1.3									

Zonal Cavity Coefficients - HBG654M21

Lamp	2950 Lumens								
RC	.80			.50			.30		
Wall Refl	.70	.50	.30	.50	.30	.10	.50	.30	.10
0	1.18	1.18	1.18	1.09	1.09	1.09	1.03	1.03	1.03
1	1.10	1.05	1.01	0.97	0.94	0.91	0.92	0.90	0.88
2	1.01	0.93	0.87	0.87	0.82	0.78	0.83	0.79	0.75
3	0.93	0.83	0.74	0.77	0.71	0.66	0.74	0.69	0.65
4	0.86	0.74	0.66	0.70	0.63	0.58	0.67	0.61	0.56
5	0.80	0.67	0.58	0.63	0.56	0.51	0.61	0.55	0.50
6	0.74	0.61	0.53	0.57	0.50	0.44	0.55	0.48	0.44
7	0.69	0.56	0.47	0.53	0.46	0.40	0.50	0.44	0.39
8	0.65	0.52	0.43	0.48	0.41	0.36	0.47	0.40	0.36
9	0.61	0.47	0.39	0.45	0.38	0.33	0.43	0.37	0.33
10	0.57	0.45	0.36	0.42	0.35	0.31	0.41	0.34	0.30
Zone	Lumens			% Lamp			% Fixt		
0-30	11220			37.4			34.3		
0-40	17430			58.1			53.3		
0-60	28260			94.2			86.3		
0-90	33090			110.3			101.1		
90-180	300			1.0			0.9		
0-180	32730			109.1			100.0		
Spacing criteria: Across = 0.9; Along = 1.3									

NATURALLIGHTING.COM
 www.naturallighting.com
 888.900.6830
 email: sales@naturallighting.com