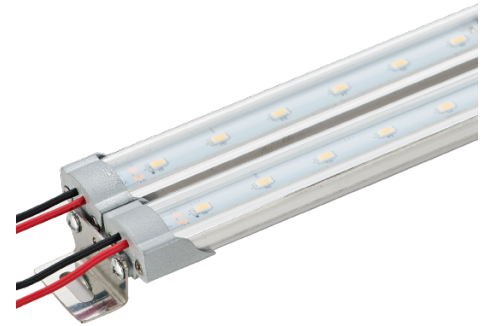


LED REFRIGERATED /COOLER LIGHTING



- Housing: Aluminum Extrusion
- Clear PC Tube, Moisture Proof
- Driver: 120V -277V, Class 2, 24VDC, 100W
- Adjustable Light Direction, Offers Even Light
- Easily replace Existing Cooler & Freezer Fluorescent Lights
- Minimum Starting Temperature: -30 °C
- Color Temperature Option: 3000K, 4000K, 5000K

Item #	Driver Input Volt	Light Input Volt	Watts	Lumen Output	Color	Dimensions (Inches)		
						Length	Width	Height
LEDC6018	120 - 277	24 V DC	18	1540	5000K	57.00	1.2	1.1
LEDC6036	120 - 277	24 V DC	36	3080	5000K	57.00	2.2	1.1
LEDC7218	120 - 277	24 V DC	18	1540	5000K	69.00	1.2	1.1
LEDC7236	120 - 277	24 V DC	36	3080	5000K	69.00	2.2	1.1

- **NOTE: ITEM NO. LEDC6018 AND LED6036 AVAILABLE.**

Power Supply – LED Driver (Item No. LEDCD96), 96 watt, 120-277 volt, Operates up to 2 -18 watt, and 2 - 36 watt LED Strips. Size: Length – 10.6”, Width – 1.75”. Height – 1.0”.