

LED NEON FLEXIBLE LIGHT



The Neon Alternative

1 - REDUCE ENERGY COST BY MORE THAN 70%

2 - REDUCE LABOR AND MAINTENANCE COSTS. LONG LIFE LED - 100,000 hours!

LED NEON FLEXIBLE LIGHT is the neon alternative (bent in field to a minimum of 4cm) – will not break like glass neon, moisture resistant, perfect for indoor/outdoor applications, low voltage, energy saving, even brightness.

COLORS AVAILBLE: RED, YELLOW, GREEN, BLUE, ORANGE, WHITE, RGB (MULTICOLOR)

VOLTAGE: 24 VOLT AND 120 VOLT.

SIGN MAKING: THE 24 VOLT IS BEST FOR SIGN MAKING.



R = Red



Y = Yellow



G = Green



B - Blue

COLORFLEX DATA

	Red	Yellow	Green	Blue
Color	Red	Yellow	Green	Blue
Light Output	7.22	5.42	6.25	2.79
Power (w/ft)	2.16	1.88	2.80	2.20
Efficacy (Lm/W)	3.34	2.86	2.23	1.72
Luminance (Lux)	290	325	405	175

Color
Light Output
Power (w/ft)
Efficacy (Lm/W)
Luminance (Lux)

Lamp
Super-Bright long-Life LED Lamps Operated at a desired rated voltage, current and environment, LEDs enjoy a long life of up to 100,000 hours

THE NEON ALTERNATIVE

Brightness Oval-shaped encapsulated jacket and super-bright LED's combine to provide uniformed and neon-like brightness.

Energy Saving Colorflex saves up to 70% or more in energy costs. Neon produces 8.75 W per ft. Colorflex – 2.88 W per ft

Flexibility Cut at any length along the cutting mark. Easy to shape letters, patterns, motifs and other applications.

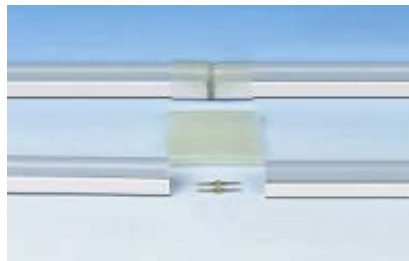
LED NEON FLEXIBLE LIGHT - RGB COLOR CHANGING SYSTEM**The Color Changing Neon Alternative**

RGB Color Changing System is a new addition to the neon alternative. This color changing Colorflex product will not break like glass neon; it is moisture resistant, perfect for indoor/outdoor applications, low voltage, energy saving, even brightness.

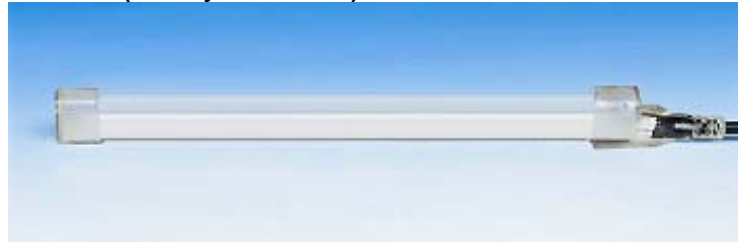
Functions	LED Color Changing system designed for static color, alternate color combinations, in waves, sequential, slow-glo, chasing, fade-in/Fade out, Twinkle/Flash.	Brightness	Oval-shaped encapsulated jacket and super-bright LED's combine to provide uniformed and neon-like brightness.
Lamp	Super-Bright long-Life LED Lamps Operated at a desired rated voltage, current and environment, LEDs enjoy a long life of up to 100,000 hours	Energy Saving	Colorflex saves up to 70% or more in energy costs. Neon produces 8.75 W per ft. Colorflex – 2.88 W per ft
		Flexibility	Cut at any length along the cutting mark. Easy to shape letters, patterns, motifs and other applications.

LED NEON FLEXIBLE LIGHT (Assembly Options)

Option 1. Easy Connector (Field Assembled)



Option 2. Molded Connector (Factory Assembled)



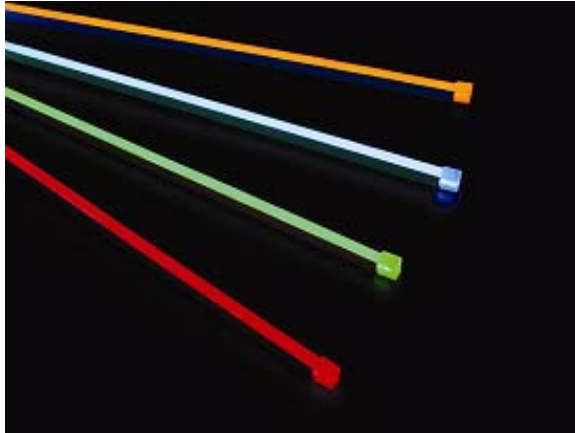
Front Connector includes
Molded Power Connector

Field dimension required
for factory assembled
Colorflex lengths.



Molded End Cap with Power Supply

LCF SERIES - COLORFLEX (COMPONENTS)



High Voltage Power Supply



Includes:

- Power Plug
- AC/DC Converter

Low Voltage Power Supply



Includes:

- Power Plug
- Transformer
- AC/DC Converter

Middle Connector with Cable



Includes:

- Female Power Connector
- Male Connector Pin
- Heat Shrink Tube

'X' Connector



Includes:

- X-Connector
- Male Connector Pin
- Heat Shrink Tube

'T' Connector



Includes:

- T-Connector
- Male Connector Pin
- Heat Shrink Tube

'L' Connector



Includes:

- 'L' Connector
- Male Connector Pin
- Heat Shrink Tube

LED NEON FLEXIBLE LIGHT (INSTALLATION INSTRUCTIONS)

1. Cutting Mark



LCF series Colorflex must be cut only on the indicated mark

2. Linear Installation



LCF-CHANNEL available on request. Consult factory.

3. Curve Installation



Install with LCF-MC mounting clip, provided with screws.

4. For 90° Installation



Installs with LCF-MC mounting clip, provided with screws. At 90° bend place clips as close as possible at each leg,

5. For 180° Installation



Installs with LCF-MC mounting clip as shown.

6. Convex Installation



Installs with LCF-MC mounting clips. Mount clips 3" to 4" apart depending on radius of the curve.

7. Concave Installation



Installs with LCF-MC mounting clips as shown

8. Installation in a formed slot



Press Colorflex into the slot of the installation

It is recommended to mark centerlines or draw the outline of your pattern on the surface of your desired positions.

Secure mounting clips along the centerlines at appropriate intervals with screws

Insert Colorflex into the mounting clips with the lighting part facing upward.

Connect each length of Colorflex together.